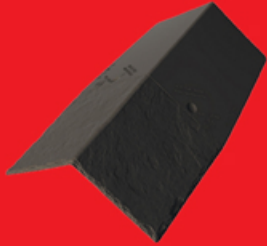
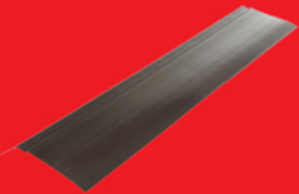




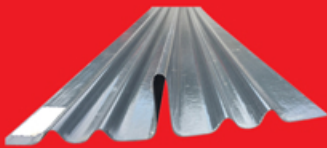
Vent



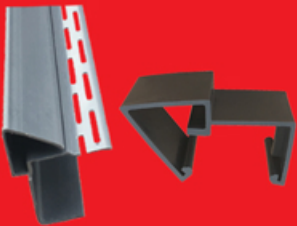
Ridge



Eave Slate



Valley



Dry Verge and Connector



Adaptors and Flexible Pipe



Nails / Tek Screws

## SLATE 600

# A Unique Combination The First Double Formated Slate



### SUITABLE FOR THE FOLLOWING TYPES OF PROJECTS

- Conservatories
- Modular Building
- Extensions
- Garden Buildings and Offices
- Lean-to's
- Lowpitch Roofing
- Chalets
- Park Homes
- Schools
- Commercial Buildings
- Roof Renovations
- Non Traditional Housing
- Traditional Housing

### ADVANTAGES

- Traditional Slate appearance
- 15° min pitch / low pitch
- 11 kg/m<sup>2</sup>
- Only 7 Slate per m<sup>2</sup>
- Fast to install
- Maintenance Free
- Does not break or crack
- No sorting or drilling
- Riven edges
- Cost effective
- DIY friendly
- Ridge 5.5 per linear metre
- Fully dry fix
- Foot traffic friendly
- Formable down to 15°
- Colour Slate grey
- Bio-based technology
- Long lasting superior surface
- Leading patented technology for greener living
- Standerd batten gauge 237mm
- Lap 126mm
- Fire tested
- Full fitting instructions [www.britmet.co.uk](http://www.britmet.co.uk)

Britmet Tileform's new Slate 600 is an alternative modern day traditional slate. The unique double slate format has only 7 slates per m<sup>2</sup>, allowing for fast and easy installation, at only 11kg/m<sup>2</sup>, the Slate 600 can be used on roofs where a lightweight roof is required, such as roof renovations, garden buildings, conservatories, non-traditional houses, lean-tos to name a few.

The high performing Slate 600 can be fixed to roof pitches as low as 15°, fully dry fixed, DIY friendly and does not break or crack like traditional slates.

The Slate 600 is easy to cut using a fine-toothed jigsaw, or tin snips and comes with large range of accessories and can be fixed using nails or fasteners.

The built-in camber allows for a tighter fit, the tough and durable Slate 600 gives great security and is made from high quality green coat steel, which provides buildings with high colour retention, long lasting finishes in any weather. This eco-friendly coated steel featured a "bio-based" technology coating, reducing the environmental impact and allows for greener living.

### Manufacturers of light weight roofing systems

Britmet Tileform Ltd, Spital Farm Offices, Thorpe Mead, Banbury, Oxon. OX16 4RZ  
Tel: 01295 250998 Fax: 01295 271068 Email: [sales@britmet.co.uk](mailto:sales@britmet.co.uk) [www.britmet.co.uk](http://www.britmet.co.uk)



**A British Manufacturer. Keeping the Pound in Britain.  
Making our Economy Stronger.**