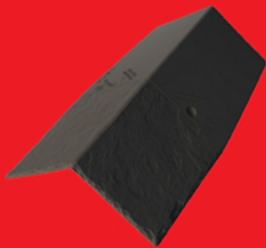


EASY SLATE

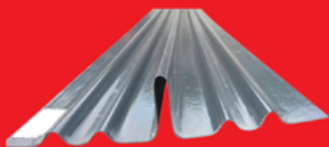
A Strong, Durable, Recyclable, Synthetic Slate



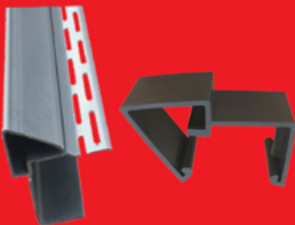
Vent



Ridge



Valley



Dry Verge and Connector



Adaptors and Flexible Pipe



Nails

COVERAGE

Pitch	Gauge	Slate m ²
14.5 - 25°	152mm	22
25 - 27.5°	165mm	20
27.5 - 30°	178mm	19
30 - 90°	190mm	18

SUITABLE FOR THE FOLLOWING TYPES OF PROJECTS

- Conservatories
- Houses
- Extensions
- Garden Buildings and Offices
- Lean-to's
- Lowpitch Roofing
- Timber Buildings
- Chalets
- Modular Buildings
- Roof Renovations
- Garden Rooms
- Non Traditional Housing

ADVANTAGES

- Traditional natural slate appearance
- 14.5° min pitch
- 15.4 kg/m²
- 22 tiles per m²
- Fast to install
- Maintenance Free
- Does not break or crack
- No sorting or drilling
- Riven edges
- Cost effective
- DIY friendly
- Fully dry fix
- Foot traffic friendly
- Cut with sharp blade
- Fire tested
- Ridge/Hips 5.5 per linear metre
- No extra starter course required
- Nail fixed
- Full fitting instructions www.britmet.co.uk
- Colour Pantone black

The Britmet Tileform high performance synthetic slate tile is a beautiful looking, modern day version of a traditional slate tile. It has all the characteristics you can expect from a traditional slate such as authentic finish, riven edges and in the traditional slate colour. Unlike natural slate Easy Slate will not crack, break, chip or delaminate through its ground-breaking design and cutting-edge manufacturing process.

As the name suggests, Easy Slate is very easy to fix, making it the perfect choice for any DIY project. Also, is stress free for any tradesman looking to fit Easy Slate for the first time, due to the visible fixing locations, pre-installed spacers and easy to follow lapping instructions. Easy Slate is also easy to cut, you only require a sharp fine tooth saw or a sharp blade, which means you don't have to worry about hiring or buying any slate cutters or tools.

Manufacturers of light weight roofing systems

Britmet Tileform Ltd, Spital Farm Offices, Thorpe Mead, Banbury, Oxon. OX16 4RZ
Tel: 01295 250998 Fax: 01295 271068 Email: sales@britmet.co.uk www.britmet.co.uk



**A British Manufacturer. Keeping the Pound in Britain.
Making our Economy Stronger.**